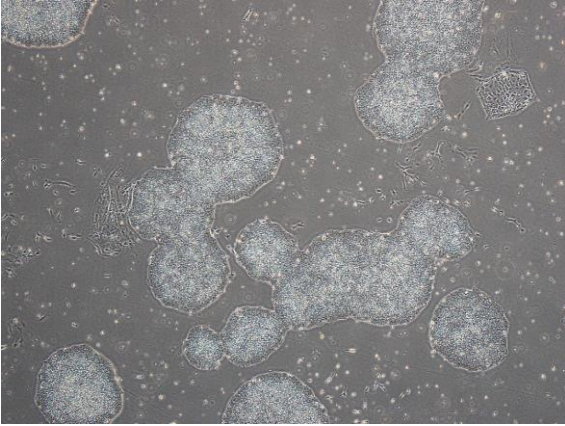
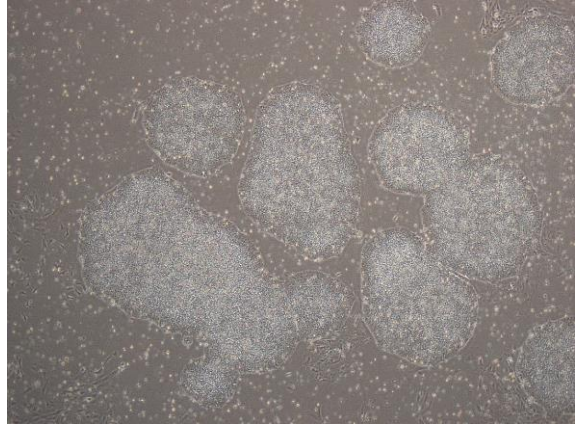


【 CiRA-j-1085 】 Morphology of iPSC colonies

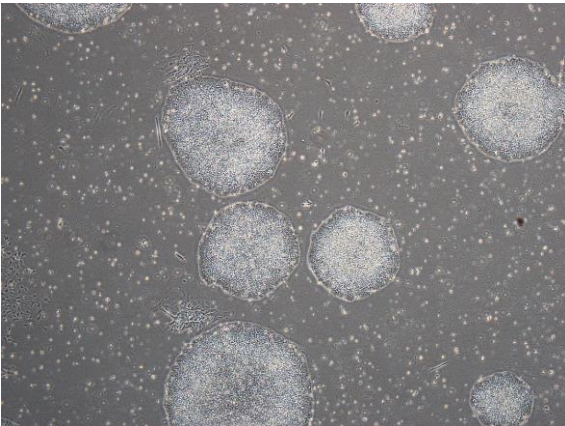
CiRA-j-1085-A: passage-2



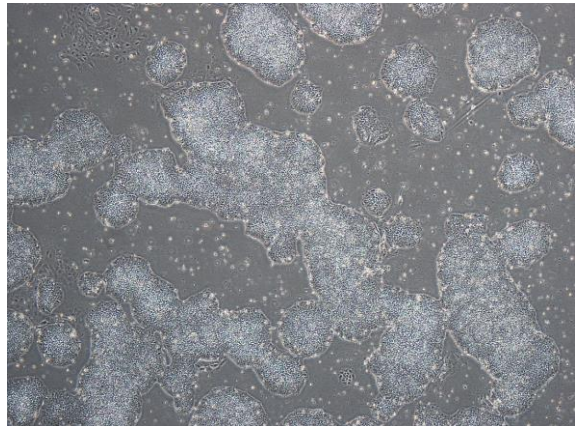
CiRA-j-1085-B: passage-2



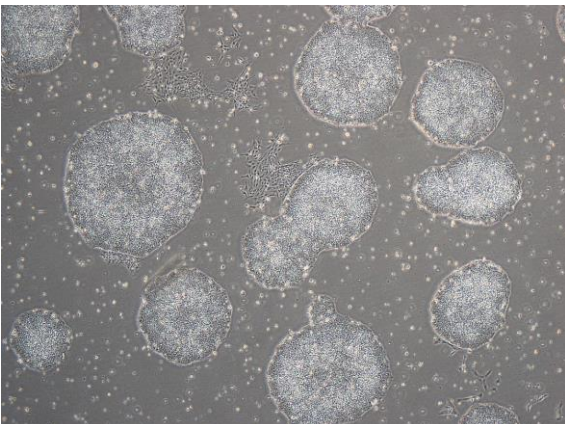
CiRA-j-1085-C: passage-2



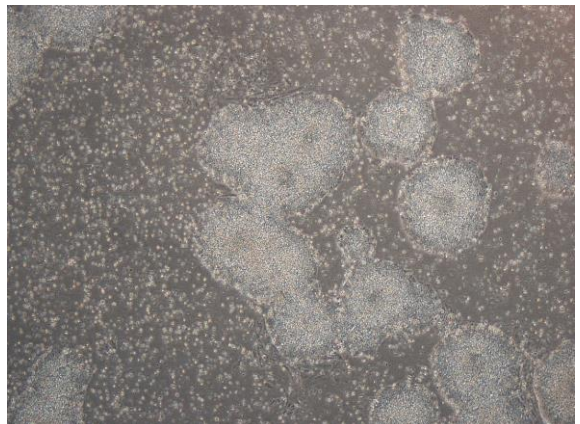
CiRA-j-1085-D: passage-2



CiRA-j-1085-E: passage-2



CiRA-j-1085-F: passage-2



(All images were captured at 4x magnification)